

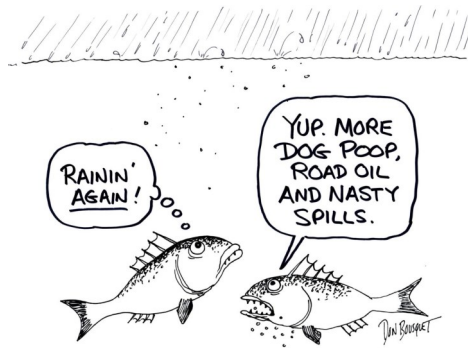
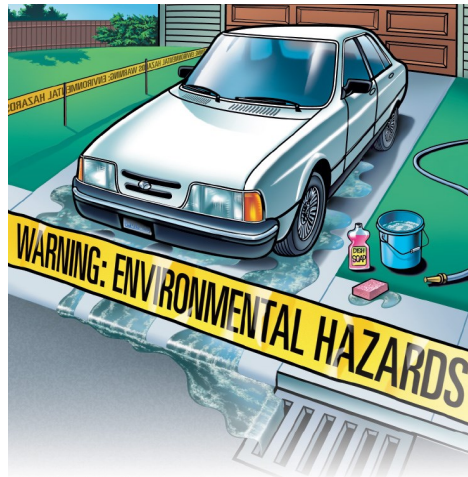
STORMWATER MATTERS

Stormwater carries garbage and pollutants from roofs, yards, parking lots, driveways, and streets into our water systems and can affect the health of not only the residents of South Florida, but that of local wildlife and vegetation.

PROTECT STORMWATER QUALITY

You can help to prevent pollution of our stormwater by following these tips:

- Do not dump hazardous substances such as used oil, household chemicals, yard fertilizer, sanitary waste, or other wastes onto pavement, patios or into storm drains.
- Do not change your car oil on your driveway, parking areas, or on the streets. Repair your vehicle in authorized Auto Repair facilities.
- Prevent excess runoff of pesticides, fertilizers, and herbicides by using them efficiently.
- Conserve and recycle resources such as paper, plastic, glass, metals, oils, and household hazardous materials to prevent contamination.
- Practice street sweeping by picking up litter and disposing of leaves and yard waste. Do not dump grass, leaves, branches or other yard waste into storm drains.
- Do not dispose of construction debris, discarded building material, concrete washout, onto pavement, green areas or into storm drains.
- Maintain your private storm drainage system.
- Pick up after your pet and dispose in a nearby trash can.



Florida City UTILITIES DEPARTMENT

404 West Palm Drive
Florida City, FL 33034
PHONE: 305-242-8109

WATER & SEWER DEPARTMENT PHONE: 305-245-9434

Report any violations of the protective measures discussed in this brochure to the City of Florida City at the phone number and/or the e-mail listed below.

FLORIDA CITY CODE ENFORCEMENT DEPARTMENT

Phone: 305-242-8102
code-enf@floridacityfl.gov
www.floridacityfl.gov

Florida City UTILITIES DEPARTMENT AND WATER & SEWER DEPARTMENT

ILLICIT DISCHARGE AND IMPROPER DISPOSAL INFORMATIONAL BROCHURE



What is Stormwater?

Stormwater is water from precipitation that flows across the ground and pavement due to rain. The water may seep into the ground, flow into ditches or streams, or enter the storm drain system. The storm drains are the openings along the streets and curbs which allow water on the street to be collected below ground. The storm drains lead to a discharge point directly into the groundwater or into one of the canals within Florida City, and eventually to larger bodies of water and the Biscayne Aquifer.



What is an Illicit Discharge?

An illicit discharge is any discharge into a municipal storm drain system that is not composed entirely of stormwater. The pollutants that fall into this category include:

- Car wash wastewater
- Gas and motor oil
- Sanitary wastewater
- Grass and yard waste
- Household cleaners, paints and solvents
- Pesticides, herbicides, and fertilizers

Miami-Dade County's Public Works & Waste Management Department has two home chemical collection centers which accept oil-based paint, pesticides, solvents, pool chemicals, electronic waste. They are open Wednesday–Sunday from 9 a.m. to 5 p.m. and are located at:

- 8831 NW 58th Street
- 23707 SW 97th Avenue, Gate B

Stormwater Runoff Cycle



City of Florida City
www.floridacityfl.gov

How You Can Help

Business Owners -

- Properly store and dispose of hazardous chemicals and substances used in commercial processes.
- Maintain privately owned stormwater ponds and landscape features to prevent excess erosion and off-site runoff.
- Familiarize yourself with your particular drainage system and how it fits into the overall South Florida drainage picture. (System design, permitted use, level of protection, and maintenance requirements)



Residents and Homeowner Associations -

- Follow label directions on pesticide and fertilizer containers and dispose of properly.
- Use yard waste as mulch or dispose of leaves and grass clippings by bagging or composting.
- Recycle approved containers and properly dispose of household chemicals and other hazardous products at designated collection sites.
- Report the location and condition of any clogged or damaged facilities to the City Water and Sewer Department in advance of the summer rainy season.
- For additional reference, see the Florida-Friendly Landscape Guidance Models for Ordinances, Covenants, and Restrictions produced by the Florida Department of Environmental Protection.